



Facilities Master Plan

2023-2033

CANNONDESIGN

Board of Trustees Engagement

November 13, 2023

Plan Requirements

- Required by the state every 10 years
- Establish a framework to support the mission and vision of the College
- Address key issues to support enrollment, define space needs, and new facilities initiatives
- Address the relationship between the College and adjoining business and residential communities
- All projects that seek state funding must be included in the FMP to be eligible for State Aid

The Facilities Master Plan includes:

- An evaluation of current facilities conditions
- A summarization of projected needs
- An overview of the College



Foundations

- **Prioritize Student and Employee Success** – through expanded spaces in support student and employee wellness, informal learning/study, dining and amenities, branding, and intuitive wayfinding.
- **Reinvent Existing Facilities** – through renovation and strategic interventions, right size classroom and lab spaces, create faculty hubs, repurpose under-utilized square footage.
- **Expand Access** – provide a touchdown for county services, non-profits and businesses, enhance childcare options and consider both physical and virtual environments.
- **Plan Prudently** – each campus has land use constraints, limiting future development. Project development should consider maximizing future development potential while continuing to create activated, green campuses.
- **Active Engagement** – seek broad range of student, faculty, staff, and community input and feedback in the envisioning process

Germantown

- Create a catalyst for PIC-MC
- Leverage & activate green spaces
- Expand utilization at PG

Rockville

- Enhance the pedestrian core
- Enhance arrival and frontage
- Expand development potential

Takoma Park/Silver Spring

- Enhance Takoma Park campus core
- Focus on student amenities (dining, rec)
- Connect to Silver Spring

Consensus

- **New Learning Environments** – Student learning needs have shifted to a broad range of digitally infused spaces to serve individual and group learning. Classroom upgrades will support new learning modalities, but additional spaces beyond the classroom are needed. Renovating under utilized existing spaces can meet this need.
- **Student and Employee Wellness** – Combining health, mental wellbeing, physical fitness and health education in a coordinated facility to connect to the full spectrum of student wellbeing. Facilities at Germantown and Rockville need improvement and expansion to meet the needs of today’s students and employees. TPSS needs a replacement for Falcon Hall.
- **Connecting Services** – To support student success, special considerations need to be made for students who work, have young children, need access to technology, or need to connect to county services.
- **Addressing the Arts** – Arts spaces are highly utilized across each campus. Providing a plan for accommodating demand is needed.
- **Making a Place** – Attention to outdoor space, cohesive wayfinding and site amenities have risen as opportunities to enhance student engagement.

Reflecting on what was presented:

1. What resonates or is promising?
2. What clarifying questions do you have?

Building Belonging

a three-tier approach to guide targeted investment over time

LARGE

Addressing Growth

What cards do we have to play?

MEDIUM

Community Stewardship

How to leverage and improve existing resources?

SMALL

Brand & Student Identity

What can be done in the short term?

PROJECTS:

New Buildings...

- Student Services
- Wellness + Academic
- East County

Strategic Renovations...

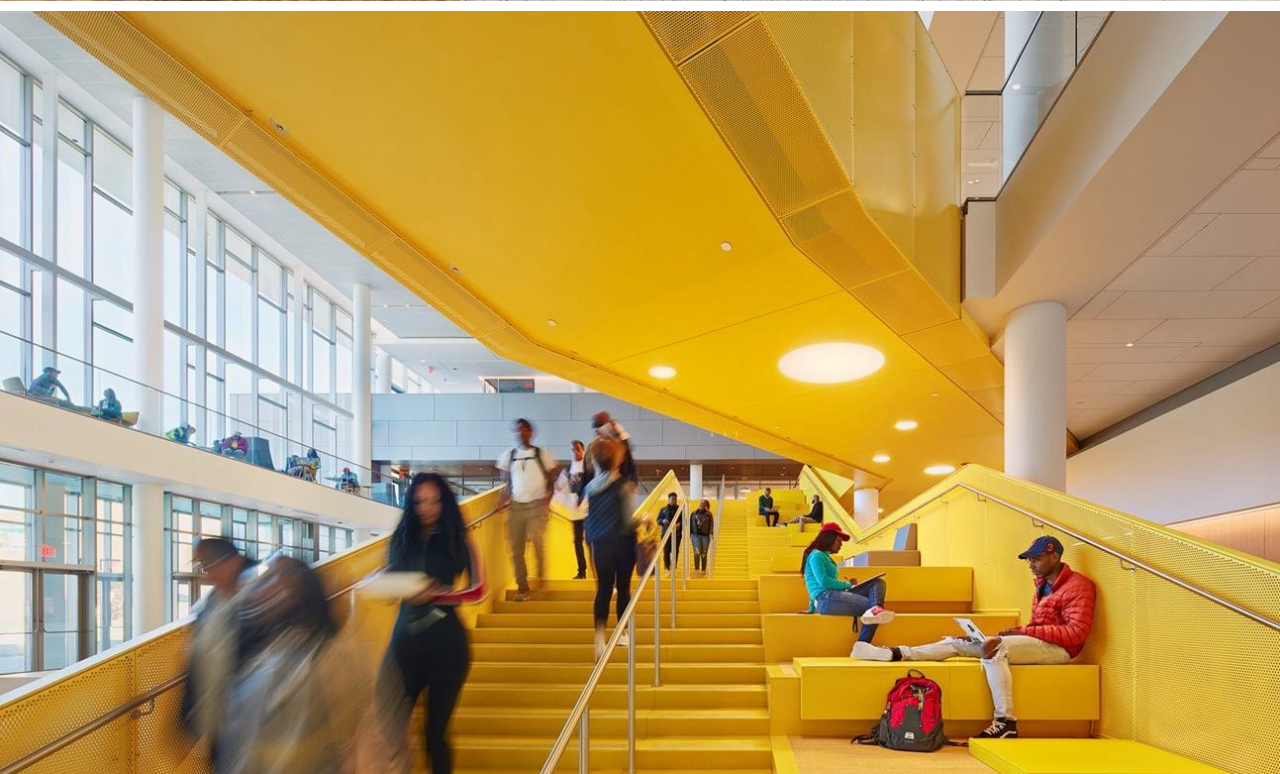
- Macklin Tower
- Theater Arts
- Student Affairs and Science – Phase 2

Smaller-Scale Inventions...

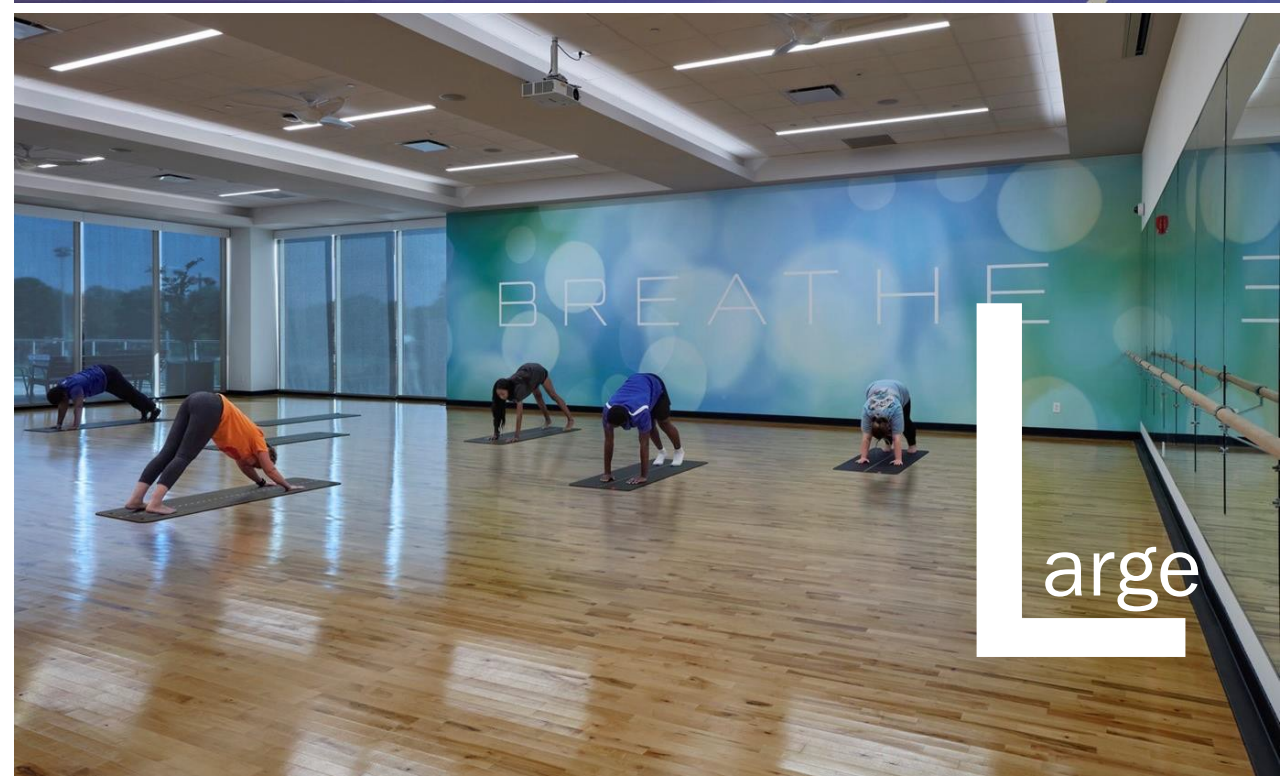
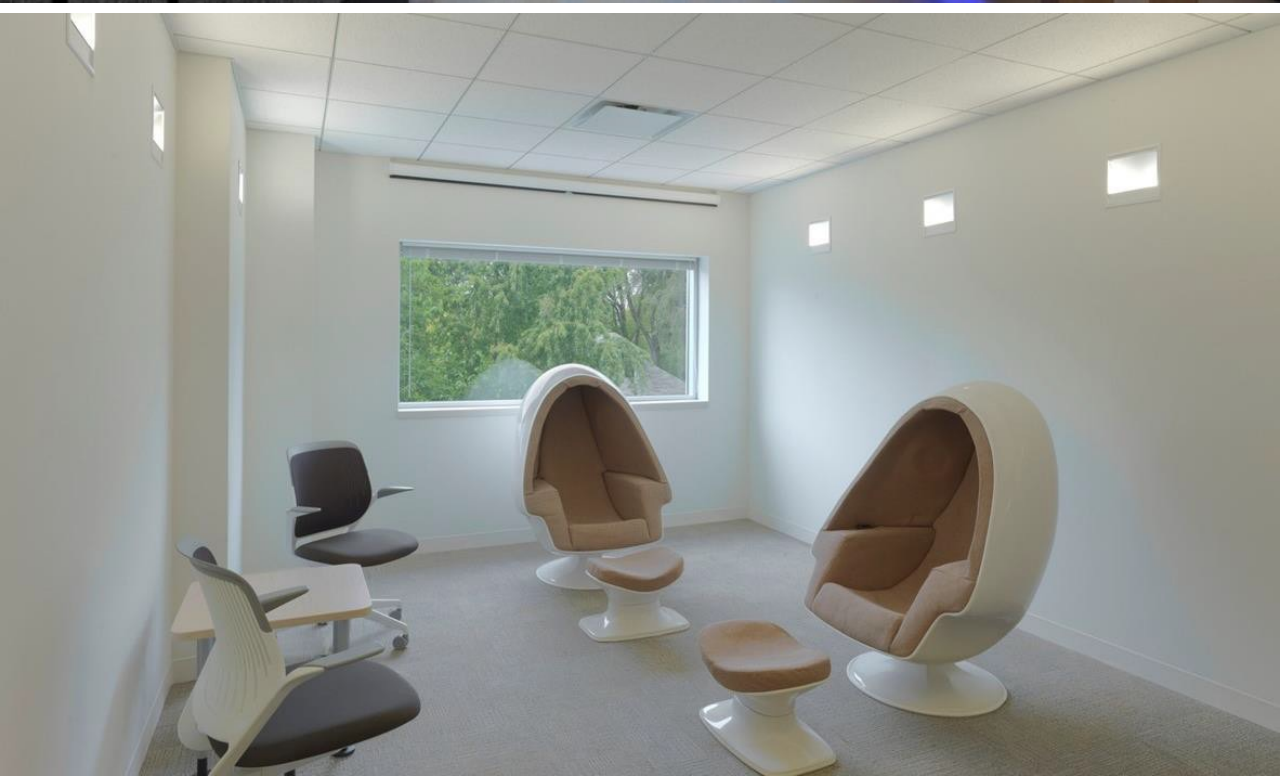
- Student Hubs
- Transparency
- Wellness

Examples of Three-Tier Approaches

Student Services



Wellness + Academic



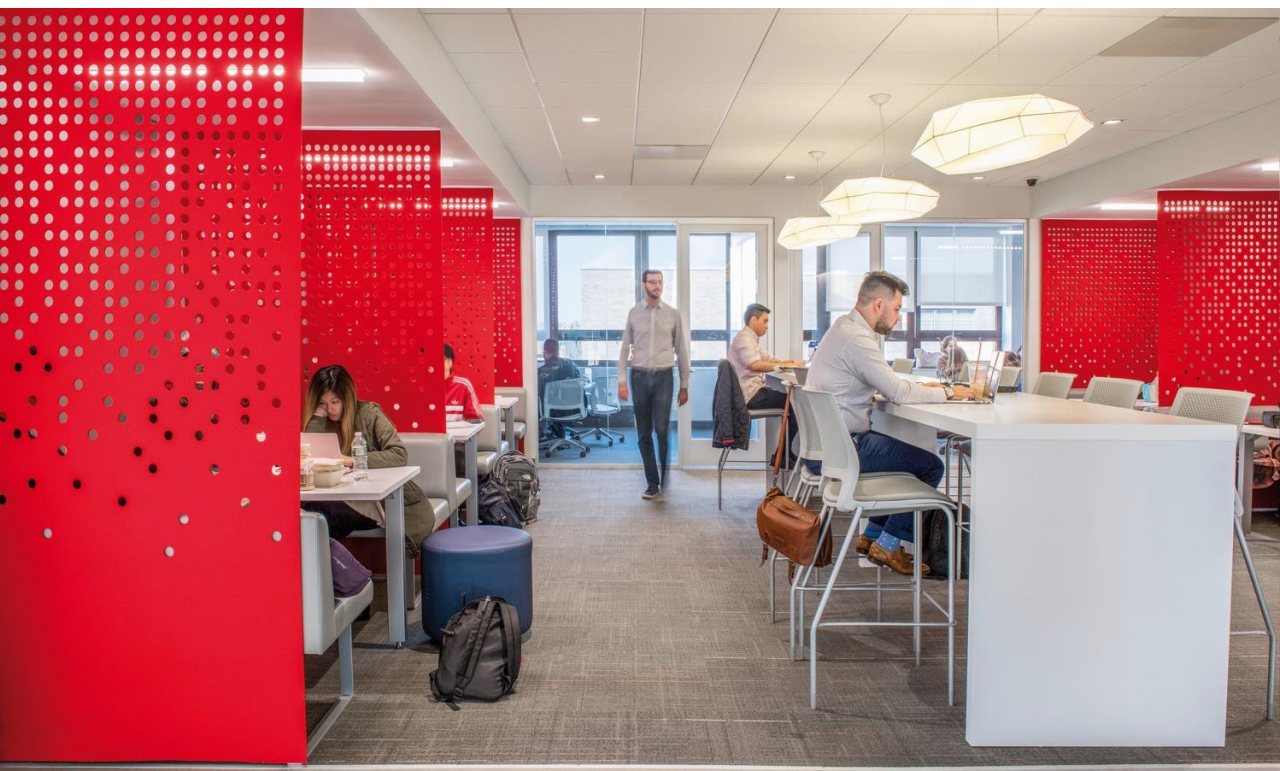
Large

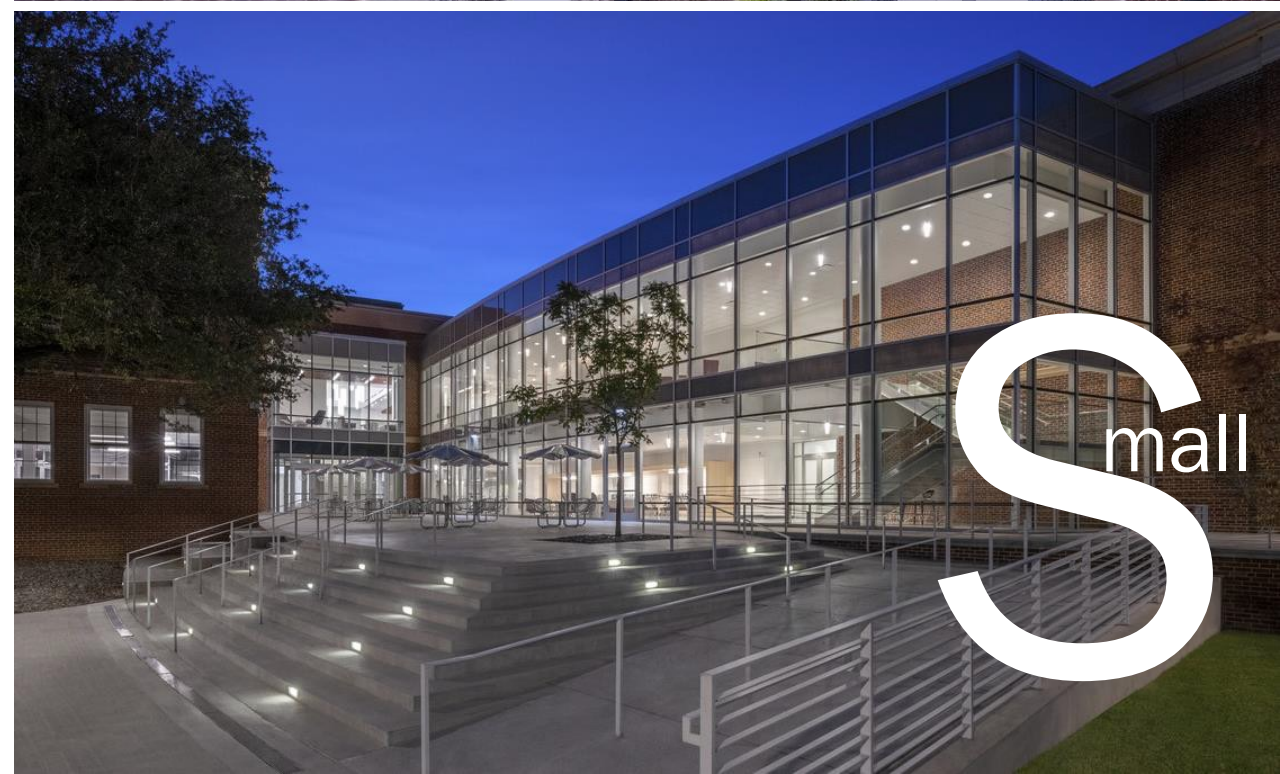
STEM



Library







Reflecting on what was presented:

1. What resonates or is promising?
2. What clarifying questions do you have?

Germantown

2033 Master Plan

Sequence 1

1. Student Services Center
2. SA Addition
3. PG Renovation and Addition
4. Baseball Facility

Sequence 2

5. Parking Garage
6. Arts and Communications Building

Sequence 3

7. Humanities Building
8. HT Renovation
9. PK Renovation
10. Potential Housing Site

Sequence A

11. Science/Math/Health Science Building

BE	Bioscience Education Center	SA	Dr. DeRionne P. Pollard Student Affairs and Science Building
BS	Baseball Storage	WT	Water Tower
CG	Child Care Center		
CP	Central Plant		
GN	Greenhouse		
HS	Humanities and Social Science Building		
HT	High Technology and Science Center		
PG	Physical Education Building		
PK	Paul Peck Academic and Innovation Building		



Rockville

2033 Master Plan

Sequence 1

1. TA Renovation and Addition
2. MT Renovation
3. CC Renovation
4. Facilities Lot
5. Wellness Facility
6. Proposed Forest Conservation Plan
7. Track & Field Improvements

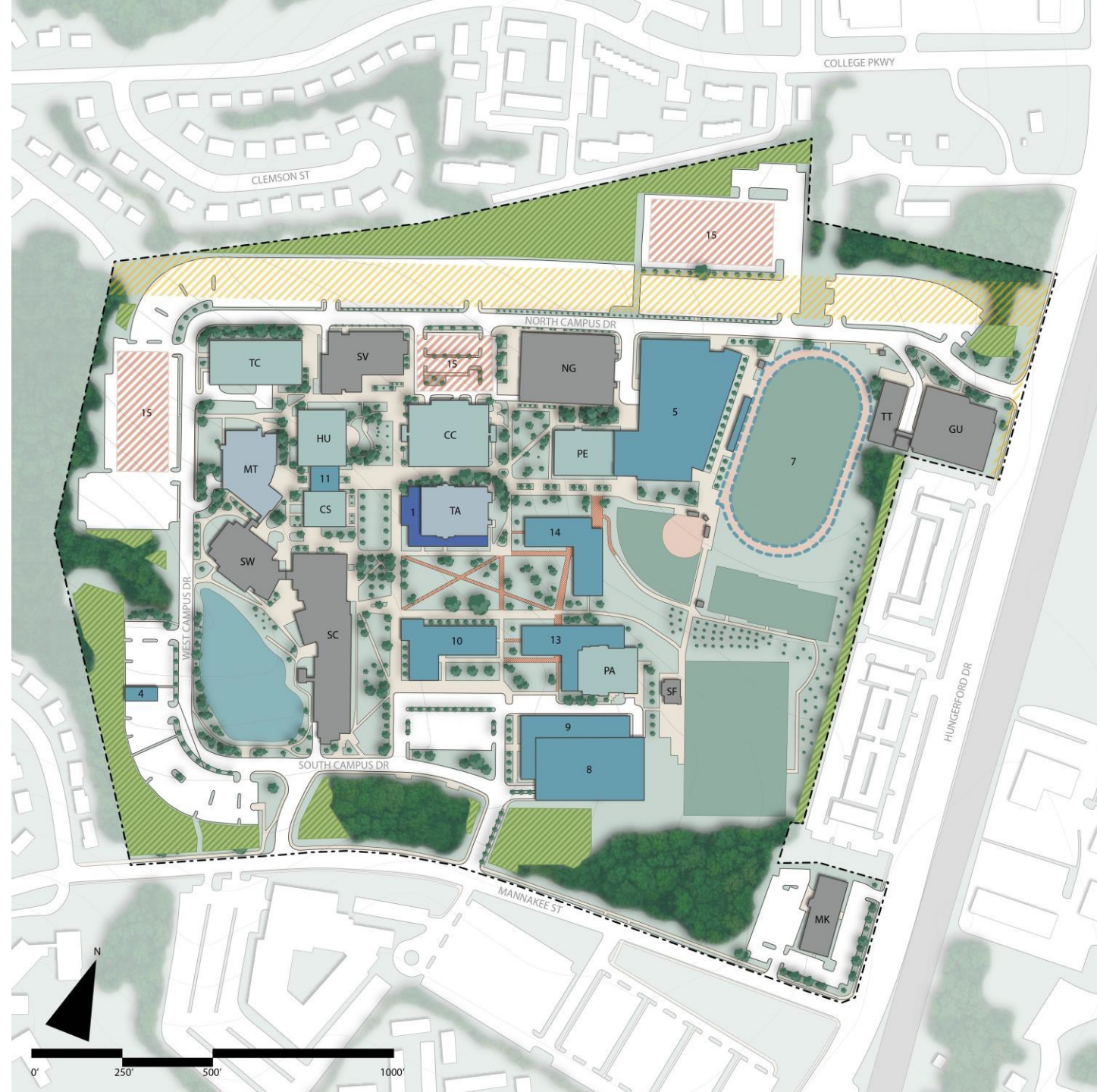
Sequence 2

8. South Garage
9. Academic + Office Wrapper
10. Media Arts Building
11. HU and CS Renovation and Addition

Sequence 3

12. TC Renovation
13. PA Renovation and Addition
14. Future Academic Building
15. Potential Housing Sites

AR	Paul Peck Art Building	PA	Robert E. Parilla Performing Arts Center
CB	Academic Annex	PE	Physical Education Center
CC	Campus Center	SB	South Campus Instruction Building
CH	Child Care Center	SC	Science Center
CS	Computer Science Building	SF	Soccer Field House
GU	Homer S. Guldesky Institute for Technical Ed.	SV	Long Nguyen and Kimmy Duong Student Services Building
HU	Humanities Building	SW	Science West Building
MK	Mannakee Building	TA	Theatre Arts Building
MT	Gordon and Marilyn Macklin Tower	TC	Technical Center
MU	Music Building	TT	Interim Technical Training Center
NG	North Garage		



TP/SS

2033 Master Plan

Sequence 1

1. Academic + Wellness Facility
2. Parking and Health Sciences Building
3. Site improvements

Sequence 2

4. Systemic Renovations – P1, P2, + P4

CF	The Morris & Gwendolyn Cafritz Foundation Arts Center	P3	Pavilion 3
CM	Catherine F. Scott Commons	P4	Pavilion 4
CU	Cultural Arts Center	RC	Resource Center
EG	East Garage	SN	Science North
HC	Health Sciences Center	ST	Charlene R. Nunley Student Services Center
LG	Leggett Math and Science Building	WG	West Garage
MP	Mathematics Pavilion		
NP	North Pavilion		
P1	Pavilion 1		
P2	Pavilion 2		



East County Campus Overview

Holistic Campus: Mission-driven, leveraging academic + business connections, community-oriented—dedicated campus spaces to promote learning and social development work with individuals and groups in the community using a range of formal and informal methods

New Learning Environments: Student learning needs have shifted to a broad range of digitally infused spaces to serve individual and group learning. Classroom must support new learning modalities, and additional spaces beyond the classroom are needed.

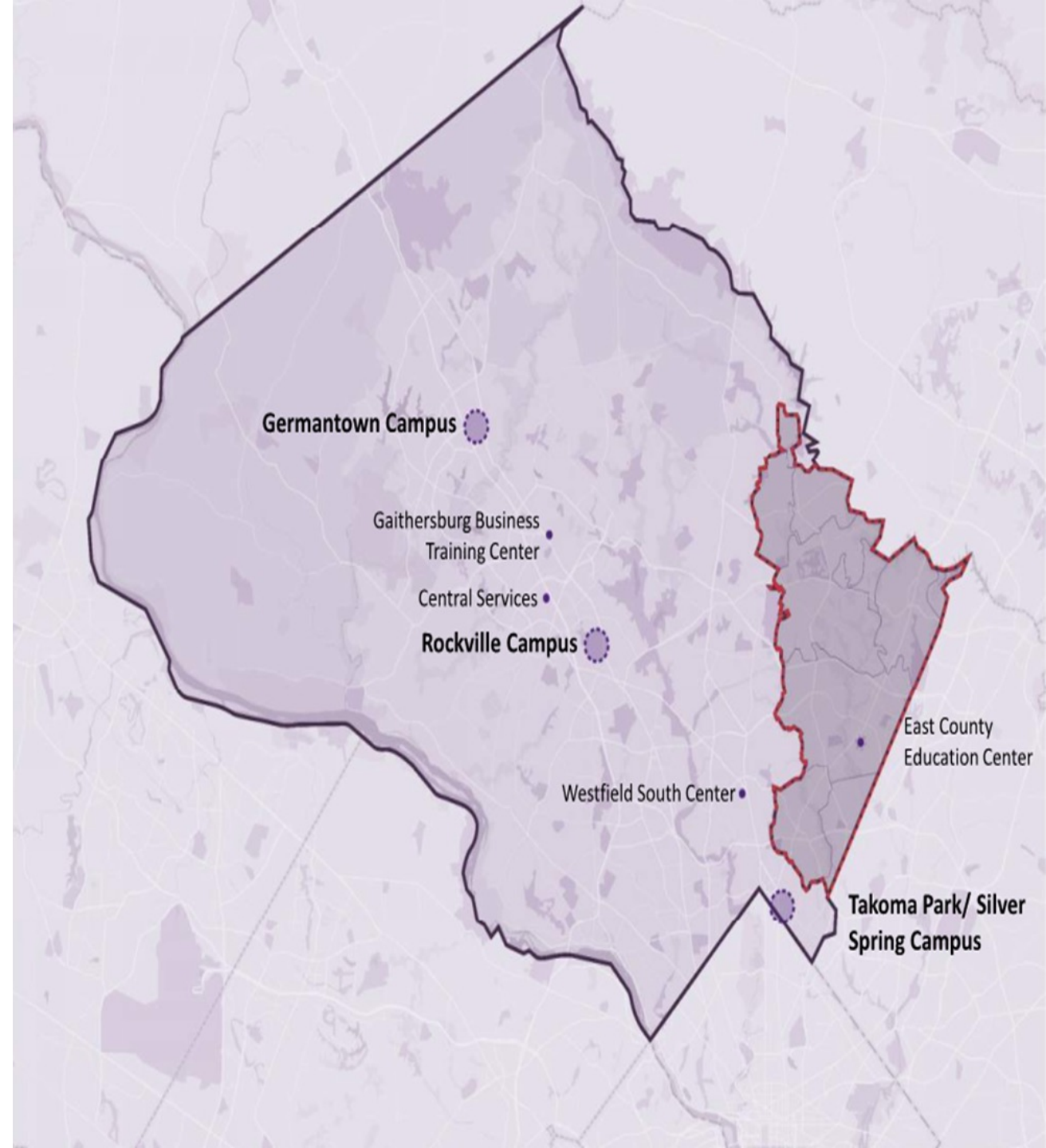
Student and Employee Wellness: Combining health, mental wellbeing, physical fitness and health education, and academic classrooms in a coordinated facility to connect to the full spectrum of student wellbeing and learning spaces. Options for community use.

Expand Access: provide a touchdown for county services, non-profits and businesses, enhance childcare options and consider both physical and virtual environments.

Student “Union”: Campus spaces dedicated to student success and development that provide opportunities for connections, collaboration, and learning outside the classroom (dining space, meeting space, student retail, recreation space).

Connecting Services and Community: To support student success, special considerations for students who work, have young children, need access to technology, or need to connect to county services.

Making a Place: Attention to outdoor space, cohesive wayfinding and site amenities as opportunities to enhance student, employee, and community engagement.



Areas for Further Development

- **Health Sciences** – It has been noted that the existing health sciences building at TPSS is not sufficient for the growing demand for this field. There are arguments that can be made to expand on several of the campuses:
 - TPSS campus, although real estate is limited
 - East County, as a catalyst for the new campus
- **East County Campus** – There have been several needs articulated:
 - A holistic campus with full student services and general education academic space
 - A location for expansion of programs that need space
 - A location for specialized curriculum, such as sustainability
 - A location for a convocation and sports facility serving the college and county
- **Residential Facilities** – While there appears to be consensus on housing being a potential for the future of the college, further examination of options to support the implementation of what type(s) of residence life programs is needed (owned and operated, leased and operated or not managed by the College)
- **PIC MC** – The goals of the PIC MC plan for GT campus are still valid and updated land use planning is underway. Ongoing coordination and alignment is critical to meet future industry and institutional needs

Consultant Background

100+

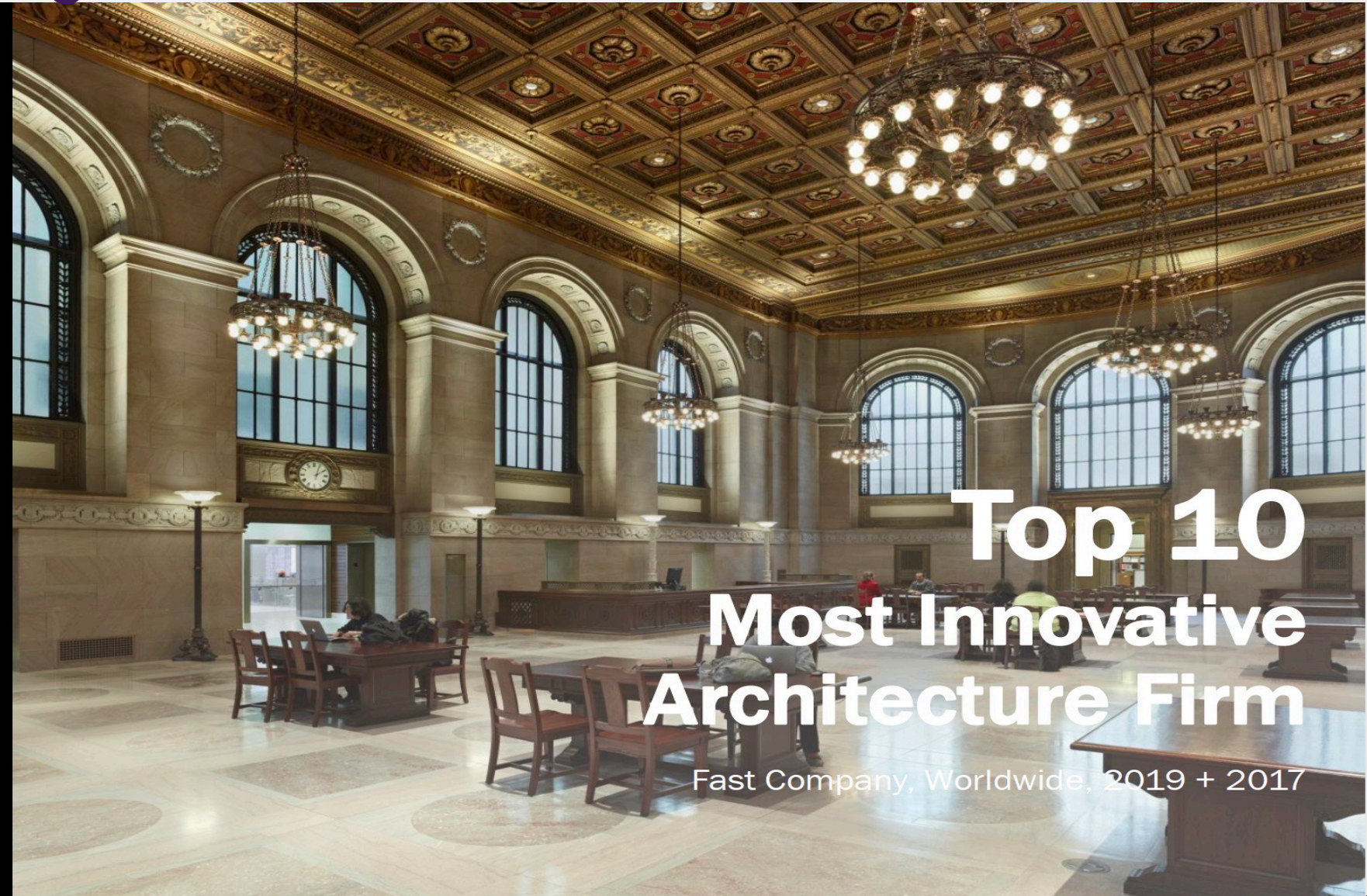
higher education master plans completed

100M

square feet of education projects completed in the last 10 years

600+

awards for design excellence and innovation in the last 15 years



**Top 10
Most Innovative
Architecture Firm**

Fast Company, Worldwide, 2019 + 2017

Reflecting on what was presented:

1. What resonates or is promising?
2. What clarifying questions do you have?
3. Do you believe the improvements support the current and future needs of students, employees, and the community?

Thank you